

# Coil Lifters and Upenders

## Model 82-NC - Narrow Coil "C" Hook



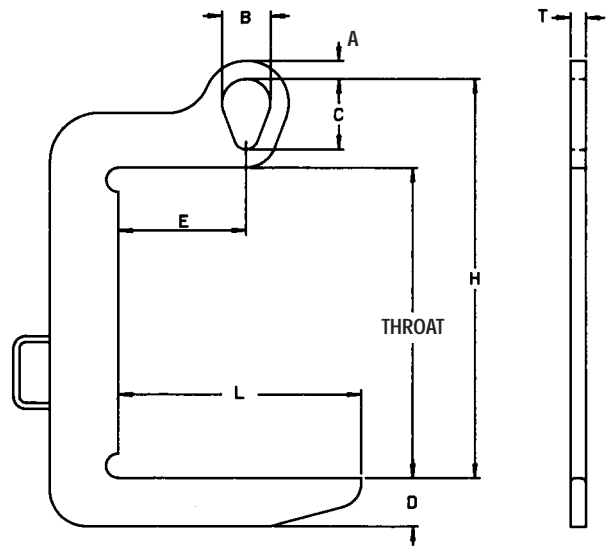
### PRODUCT FEATURES:

- Handles narrow coils with less coil edge damage.
- More durable than web slings.
- Light weight for easier handling.
- Built in guide handle for ease of coil positioning.
- Available with optional curved coil saddle.
- Inside radius on hooks avoid coil edge contact.
- Designed and manufactured to ASME B30.20.



\*Will not hang level when empty.

**CAUTION:** Center of gravity must be centered under crane hook to prevent tilting of the lifter and load.



NOTE: "E" dimension equals one-half the dimension of "L".

### SPECIFICATIONS

CATALOG NO.	CAPACITY IN TONS	Dimensions in Inches									
		COIL WIDTH MAX.	THROAT	LIFTING ARM		PLATE		BAIL DIMENSIONS			WGT. (LBS.)
				LENGTH L	DEPTH D	THK. T	HDRM H	THK. A	OPENING		
B	C										
82NC-1/2-8	1/2	8	14-1/2	8	2-1/4	1/2	18-1/2	13/16	2	3-1/4	14
82NC-1/2-12		12	14-1/2	12	2-5/8	1/2	18-1/2	13/16	2	3-1/4	17
82NC-1-8	1	8	17-1/2	8	2	1/2	21-1/2	13/16	2	3-1/4	15
82NC-1-16		16	17-1/2	16	2-1/2	1/2	21-1/2	13/16	2	3-1/4	20
82NC-2-8	2	8	19-1/2	8	2-1/8	3/4	24-9/16	1	2-9/16	4-1/16	22
82NC-2-16		16	19-1/2	16	3	3/4	24-9/16	1	2-9/16	4-1/16	40
82NC-3 1/2-12	3-1/2	12	21-1/2	12	2-7/8	1	28-1/8	1-3/16	3-5/8	5-5/16	50
82NC-3 1/2-16		16	21-1/2	16	3-3/8	1	28-1/8	1-3/16	3-5/8	5-5/16	63
82NC-5-16	5	16	25-1/2	16	3-1/2	1-1/4	32-13/16	1-1/2	4	5-13/16	94
82NC-5-20		20	25-1/2	20	4	1-1/4	32-13/16	1-1/2	4	5-13/16	110

# Coil Lifters and Upenders

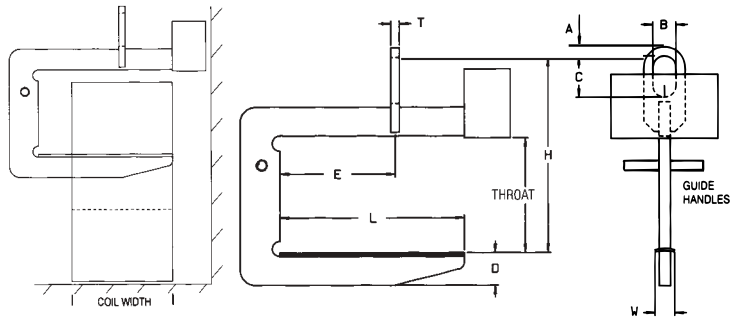
## Model 82 - Heavy Duty "C" Hook



### PRODUCT FEATURES:

- Designed for heavy duty applications.
- High tensile alloy steel plate reduces physical size and weight.
- Counter balanced to hang level.
- Inside radius on hooks avoid coil edge contact.
- Curved coil saddle is standard.
- Guide handles for ease of coil positioning.
- Handles a wide range of coil widths.
- Available with optional padding for additional coil protection.
- Designed and manufactured to ASME B30.20.

**CAUTION:** Center of gravity must be centered under crane hook to prevent tilting of the lifter and load.



### SPECIFICATIONS

NOTE: "E" dimension is always one-half of maximum coil width.

CATALOG NO.	CAP. IN TONS	DIMENSIONS IN INCHES											WGT. (LBS.)
		COIL WIDTH		THROAT	LIFTING ARM			HDRM H	BAIL DIMENSIONS			THK. T	
		MAX.	MIN.		LENGTH L	DEPTH D	WIDTH W		OPENING				
								A	B	C			
82-5-36	5	36	24	24	30	5-5/16	4	37-3/8	1-1/2	4	7	1-1/4	420
82-5-48		48	30	24	39	6-1/8	4	38	1-1/2	4	7	1-1/4	584
82-5-60		60	36	24	48	6-9/16	4	38-1/2	1-1/2	4	7	1-1/4	680
82-7 1/2-36	7-1/2	36	24	24	30	5-5/8	4	37-1/2	1-1/2	4	7	1-1/2	615
82-7 1/2-48		48	30	24	39	6-5/16	4	38-1/4	1-1/2	4	7	1-1/2	774
82-7 1/2-60		60	36	24	48	6-5/16	4	39	1-1/2	4	7	1-1/2	942
82-10-48	10	48	30	24	39	7-1/4	4	41-1/4	2	5	9	1-3/4	928
82-10-60		60	36	24	48	7-1/4	4	41-1/4	2	5	9	1-3/4	1295
82-10-72		72	42	24	57	7-1/4	4	42-1/2	2	5	9	1-3/4	1616
82-15-48	15	48	30	30	39	7-1/4	4	47-7/8	2-1/4	5	9	1-3/4	1450
82-15-60		60	36	30	48	8	4	48	2-1/4	5	9	1-3/4	1824
82-15-72		72	42	30	57	8-3/4	4	48-3/4	2-1/4	5	9	1-3/4	2227
82-20-60	20	60	36	30	48	9-1/8	4	52-1/8	2-1/4	6	12	2	2175
82-20-72		72	42	30	57	10	4	52-5/16	2-1/4	6	12	2	2625
82-25-60		60	36	34	48	9	4	57-3/4	2-1/2	6	14	2-1/4	2820
82-25-72	25	72	42	34	57	9-3/4	4	58-1/2	2-1/2	6	14	2-1/4	3570
82-30-60		60	36	34	48	9-7/8	4	58-3/4	2-3/4	6	14	2-1/2	3180
82-30-72		72	42	34	57	10-5/8	4	59-3/8	2-3/4	6	14	2-1/2	3800
82-40-72	40	72	42	38	57	11	5	68	3-1/4	7	18	3	5350
82-50-84		84	48	40	64-1/2	13	6	71-7/8	3-3/4	7	18	3	7470

Other sizes available, consult factory.

# Coil Lifters and Upenders

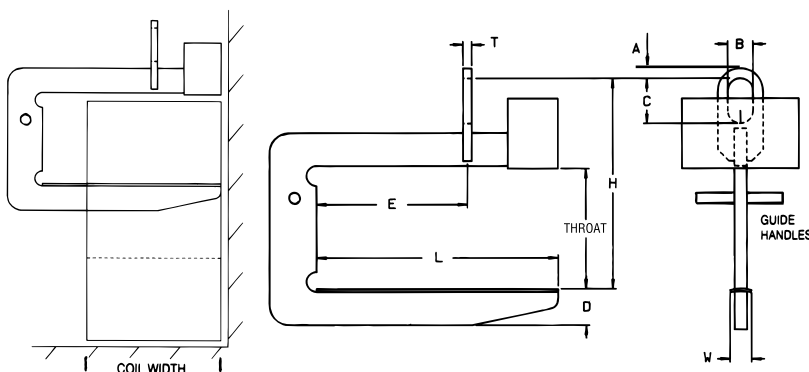
## Model 82-RC - Close Stacking "C" Hook



### PRODUCT FEATURES:

- Recessed Counterweight allows for close stacking of coils which maximizes floor space.
- Handles a wide range of coil widths.
- Designed for heavy duty application.
- High tensile alloy steel plate reduces physical size and weight.
- Counter balanced to hang level.
- Inside radius on hooks avoid coil edge contact.
- Curved coil saddle is standard.
- Guide handle for ease of coil positioning.
- Available with optional padding for additional coil protection.
- Designed and manufactured to ASME B30.20.

**CAUTION:** Center of gravity must be centered under crane hook to prevent tilting of the lifter and load.



### SPECIFICATIONS

NOTE: "E" dimension is always one-half of maximum coil width.

CATALOG NO.	CAP. IN TONS	DIMENSIONS IN INCHES											WGT. (LBS.)
		COIL WIDTH		THROAT	LIFTING ARM			HDRM H	BAIL DIMENSIONS			THK. T	
		MAX.	MIN.		LENGTH L	DEPTH D	WIDTH W		OPENING				
								A	B	C			
82RC-5-36	5	36	24	24	30	5-5/16	4	37-1/4	1-1/2	4	7	1-1/4	550
82RC-5-48		48	30	24	39	6-1/8	4	38-1/16	1-1/2	4	7	1-1/4	707
82RC-5-60		60	36	24	48	6-15/16	4	38-15/16	1-1/2	4	7	1-1/4	853
82RC-7 1/2-36	7-1/2	36	24	24	30	5-5/8	4	37-1/2	1-1/2	4	7	1-1/2	750
82RC-7 1/2-48		48	30	24	39	6-3/8	4	38-1/4	1-1/2	4	7	1-1/2	996
82RC-7 1/2-60		60	36	24	48	6-15/16	4	39	1-1/2	4	7	1-1/2	1161
82RC-10-48	10	48	30	24	39	7-3/16	4	41-1/4	2	5	9	1-3/4	1200
82RC-10-60		60	36	24	48	7-5/8	4	41-1/2	2	5	9	1-3/4	1645
82RC-10-72		72	42	24	57	7-1/4	4	41-1/8	2	5	9	1-3/4	2100
82RC-15-48	15	48	30	30	39	7-1/4	4	47-7/8	2-1/4	5	9	1-3/4	2054
82RC-15-60		60	36	30	48	8	4	48	2-1/4	5	9	1-3/4	2410
82RC-15-72		72	42	30	57	8-3/4	4	48-3/4	2-1/4	5	9	1-3/4	2814
82RC-20-60	20	60	36	30	48	9-1/8	4	52-1/8	2-1/4	6	12	2	2864
82RC-20-72		72	42	30	57	9-3/4	4	52-1/2	2-1/4	6	12	2	2951
82RC-25-60	25	60	36	34	48	9	4	57-3/4	2-1/2	6	14	2-1/4	3077
82RC-25-72		72	42	34	57	9-3/4	4	58-3/4	2-1/2	6	14	2-1/4	3570
82RC-30-60	30	60	36	34	48	9-7/8	4	58-3/4	2-3/4	6	14	2-1/2	3480
82RC-30-72		72	42	34	57	10-5/8	4	59-3/8	2-3/4	6	14	2-1/2	4260
82RC-40-72	40	72	42	38	57	11	5	68	3-1/4	7	18	3	6100

Counter weight extends beyond arm one-half of the counter weight width, in capacities 25 Ton and Greater.

Other sizes available, consult factory.

# Coil Lifters and Upenders

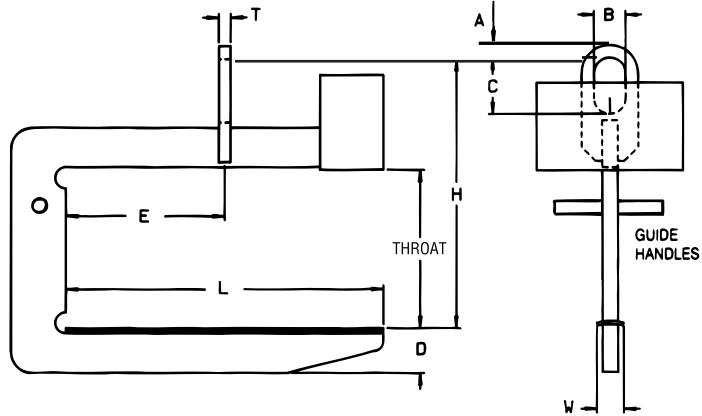
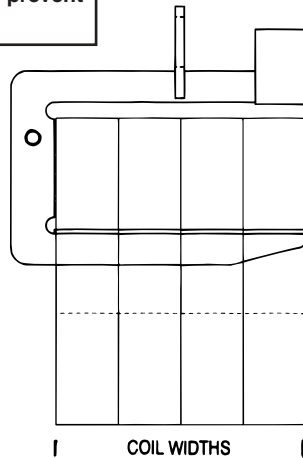
## Model 82-LA - Slit Coils "C" Hook



### PRODUCT FEATURES:

- Designed for heavy duty applications.
- Handles multiple slit coils which maximize handling efficiency.
- Recessed counterweight minimizes interference with equipment and other obstacles.
- High tensile alloy steel plate reduces physical size and weight.
- Counter balanced to hang level.
- Inside radius on hooks avoid coil edge contact.
- Curved coil saddle is standard.
- Guide handles for ease of coil positioning.
- Available with optional padding for additional coil protection.
- Designed and manufactured to ASME B30.20.

**CAUTION:** Center of gravity must be centered under crane hook to prevent tilting of the lifter and load.



NOTE: "E" dimension equals one half of "L" dimension.

### SPECIFICATIONS

CATALOG NO.	CAP. IN TONS	COIL WIDTH MAX.	THROAT	DIMENSIONS IN INCHES								WGT. (LBS.)
				LIFTING ARM				BAIL DIMENSIONS				
				LENGTH L	DEPTH D	WIDTH W	HDRM H	OPENING			THK. T	
82LA-5-36	5	36	24	36	5-5/16	4	37-1/4	1-1/2	4	7	1-1/4	450
82LA-5-48		48	24	48	6-1/8	4	38	1-1/2	4	7	1-1/4	555
82LA-5-60		60	24	60	6-9/16	4	38-9/16	1-1/2	4	7	1-1/4	649
82LA-7 1/2-36	7-1/2	36	24	36	5-5/8	4	37-5/8	1-1/2	4	7	1-1/2	496
82LA-7 1/2-48		48	24	48	6-5/16	4	38-5/16	1-1/2	4	7	1-1/2	731
82LA-7 1/2-60		60	24	60	7-1/8	4	38-7/8	1-1/2	4	7	1-1/2	898
82LA-10-48	10	48	24	48	7-3/16	4	41-1/8	2	5	9	1-3/4	932
82LA-10-60		60	24	60	7-5/16	4	41-1/8	2	5	9	1-3/4	1281
82LA-10-72		72	24	72	7-1/4	4	41-1/8	2	5	9	1-3/4	1570
82LA-15-48	15	48	30	48	7-1/4	4	47-7/8	2-1/4	5	9	1-3/4	1510
82LA-15-60		60	30	60	8	4	48	2-1/4	5	9	1-3/4	1789
82LA-15-72		72	30	72	8-7/8	4	48-3/4	2-1/4	5	9	1-3/4	2120
82LA-20-60	20	60	30	60	9-1/8	4	52-1/8	2-3/4	6	12	2	2125
82LA-20-72		72	30	72	9-15/16	4	52-15/16	2-3/4	6	12	2	2485
82LA-25-60	25	60	34	60	9-1/8	4	57-3/4	3-1/4	6	14	2-1/2	2840
82LA-25-72		72	34	72	9-3/4	4	58-1/2	3-3/4	6	14	2-1/2	3350

Other sizes available, consult factory.



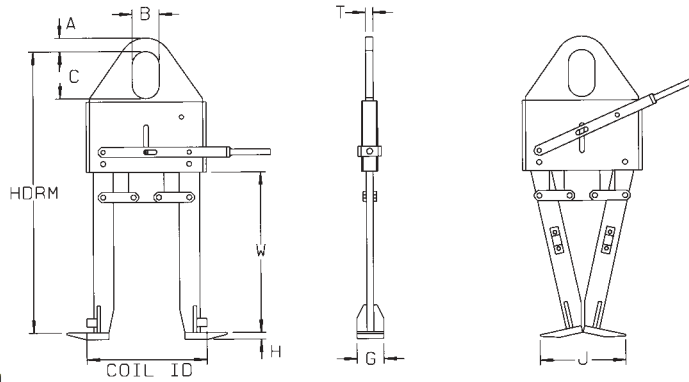
# Coil Lifters and Upenders

## Model 83 - Vertical "Eye" Coil Lifter



**PRODUCT FEATURES:**

- Efficient handling of vertically stacked coils.
- Vertically stacked coils maximize available floor space.
- Leg positioning handle is easy to operate and has a positive locking feature.
- Handles a wide range of coil I.D.'s.
- Designed and manufactured to ASME B30.20.



**SPECIFICATIONS**

CAPACITY IN TONS		CATALOG NO.		DIMENSIONS IN INCHES										WGT. (LBS.)	
				COIL I.D.		COIL WIDTH W	HDRM	BAIL DIMENSIONS				FOOT DIMENSIONS			
				MIN.	MAX.			A	B	C	T	G	H		J
1/2	83-1/2-20			20	36	1-1/4	3	5	5/8	4	3/4	13	110		
1-1/2	83-1 1/2-20	16	20	24	36	1-1/2	3	5	5/8	4	3/4	13	125		
3	83-3-20			24	40	1-1/2	3	5	3/4	5	3/4	13-1/2	180		
5	83-5-20			30	49	2	4	7	1	6	3/4	14-1/4	195		

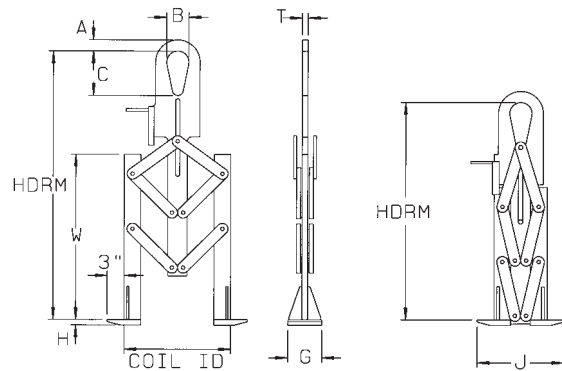
Other sizes available, consult factory.

## Model 83-EW - Extended Width Vertical "Eye" Coil Lifter



**PRODUCT FEATURES:**

- Handles a wider range of coil I.D.'s.
- Lifter legs automatically adjust to coil I.D. being lifted.
- Has higher capacity range than standard lifter.
- Unique design minimizes dunnage required between coils.
- Designed and manufactured to ASME B30.20.



**SPECIFICATIONS**

CATALOG NO.		CAPACITY IN TONS		DIMENSIONS IN INCHES										WGT. (LBS.)		
				COIL I.D.		COIL WIDTH W	HDRM		BAIL DIMENSIONS				FOOT DIMENSIONS			
				MIN.	MAX.		Open	Closed	A	B	C	T	G		H	J
83EW-1/2-24	1/2			20	36	30-7/8	1-1/4	3	5	5/8	5	1/2	14-1/2	90		
83EW-2 1/2-24	2-1/2	16	24	24	44	37-1/2	1-1/2	3	5	3/4	5	3/4	15-1/2	125		
83EW-5-24	5			30	47	40-3/8	2	4	7	1	6	1	15-1/2	170		
83EW-7 1/2-24	7-1/2			30	47	40-3/8	2	4	8	1	6	1	15-1/2	170		

Other sizes available, consult factory.

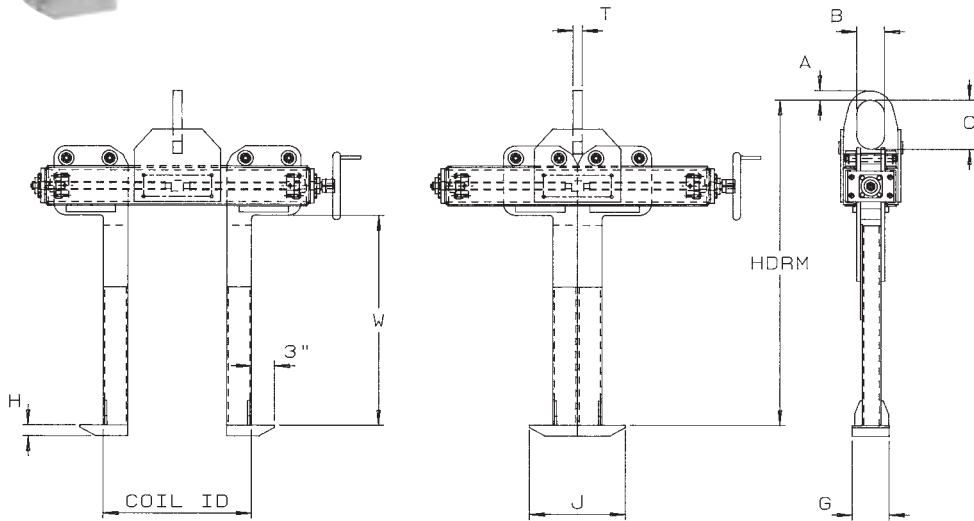
# Coil Lifters and Upenders

## Model 83-HW - Vertical Eye Coil Grab



### PRODUCT FEATURES:

- Handles an infinite coil I.D.'s within range.
- Efficient handling of vertically stacked coils.
- Available with chain wheel drive.
- Designed and manufactured to ASME B30.20.



### SPECIFICATIONS

CATALOG NO.	CAP. IN TONS	DIMENSIONS IN INCHES											WGT. (LBS.)
		COIL I.D.		COIL WIDTH	HDRM (IN)	DIMENSIONS							
		MIN.	MAX.			A	B	C	T	G	H	J	
83HW-2-1/2-24	2-1/2	16	24	20	36	1-1/2	3	5	3/4	5	3/4	15-1/2	250
83HW-5-24	5	16	24	24	41	2	4	7	1	6	1	15-1/2	350
83HW-7-1/2-24	7-1/2	16	24	24	42	2	4	7	1	6	1	15-1/2	425
83HW-10-24	10	16	24	30	50	2-1/2	5	9	1-1/4	6	1-1/2	15-1/2	500

Other sizes available, consult factory.

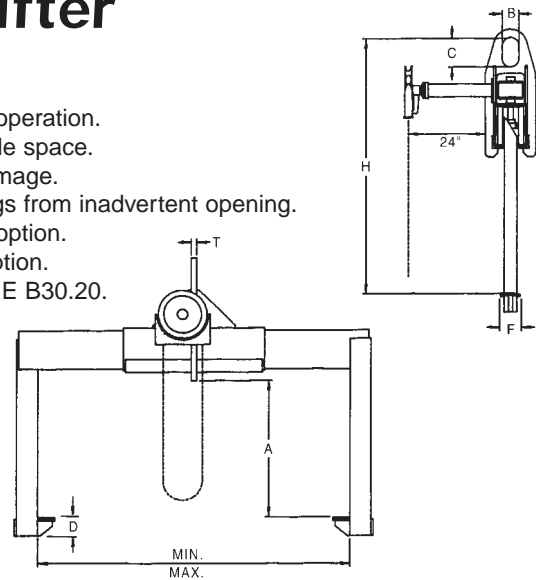
# Coil Lifters and Upenders

## Model 84 – Telescopic Coil Lifter



### PRODUCT FEATURES:

- Chain wheel provides easy manual operation.
- Two-sided coil lifter requires less aisle space.
- Curved lifting pad minimizes coil damage.
- Self locking Worm Gear prevents legs from inadvertent opening.
- Available with hand wheel leg drive option.
- Available with motorized leg drive option.
- Designed and manufactured to ASME B30.20.



### SPECIFICATIONS

CATALOG NO.	CAPACITY IN TONS	DIMENSIONS IN INCHES										WGT. (LBS.)
		COIL WIDTH		THROAT A	HDRM H	BAIL DIMENSIONS			FOOT DIMENSIONS			
		MIN.	MAX.			B	C	T	D	F		
84-5-48	5	16	48	28	52	4	7	1	4-1/2	4	485	
84-5-60		20	60	26	50	4	7	1				
84-10-48	10	16	48	32	63	4	7	1-1/4	5-1/2	4	725	
84-10-60		20	60	30	61	4	7	1-1/4				
84-15-60	15	20	60	34	69	5	9	1-1/2	6-1/2	4	930	
84-15-72		24	72	32	67	5	9	1-1/2				

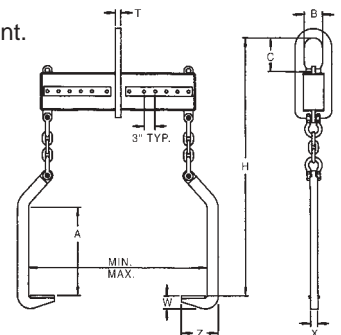
Other sizes available, consult factory.

## Model 86 – Double Leg Coil Lifter



### PRODUCT FEATURES:

- Most economical of Two-Sided Coil Lifters.
- Two-sided coil lifter requires less aisle space.
- Lifting hook width adjustment pin easy to use.
- Hooks manufactured from high tensile alloy steel.
- Coil width adjustment indicators for easy hook placement.
- Optional coil protection available.
- Designed and manufactured to ASME B30.20.



### SPECIFICATIONS

CATALOG NO.	CAPACITY IN TONS	DIMENSIONS IN INCHES											WGT. (LBS.)
		COIL WIDTH		THROAT A	HDRM H	BAIL DIMENSIONS			W	X	Z		
		MIN.	MAX.			B	C	T					
86-10-48	10	20	48	24	58	4	7	1-1/4	3-1/4	4	7	210	
86-15-48	15	20	48	28	66	5	9	1-1/2	3-1/2	4	7	352	
86-20-60	20	24	60	30	82	5	9	1-1/2	3-5/16	4	6	760	
86-25-60	25	24	60	32	94	6	12	2-1/4	4-3/4	4	8	1170	
86-30-72	30	24	72	26	83	7	16	1-3/4	4-3/4	4	8	1235	

Other sizes available, consult factory.





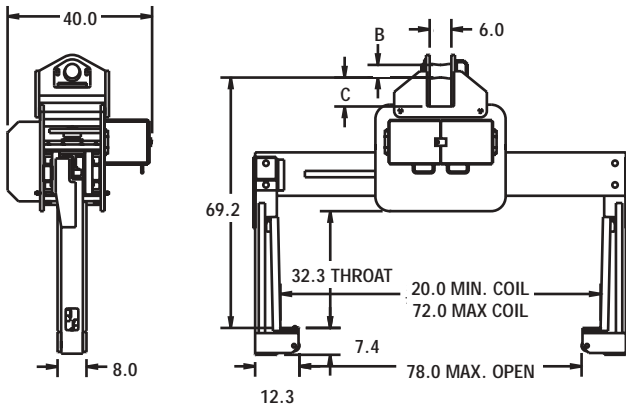
# Coil Lifters and Upenders

## Model 85 - Industrial Duty Motorized Coil Grab



### PRODUCT FEATURES:

- Motorized leg drive maximizes the efficient handling of coils.
- Leg drive speed - 2.8" per/sec.
- Narrow aisle stacking maximizes coil storage floor space.
- Curved lifting pads for coil protection.
- Hi impact plastic toe rollers prevent lifter foot contact.
- Anti-clamp limit switch protects coil during closing of lifter.
- Heavy Duty torque limiting drive protection during maximum open/closed conditions.
- Lockout limit switch prevents inadvertent leg opening during lift.
- Easily replaceable slide wear guides.
- Design allows for easy maintenance access to drive components.
- Designed to operate on AC power supply.
- Designed and manufactured to ASME B30.20.
- Upgradeable to rotating style.



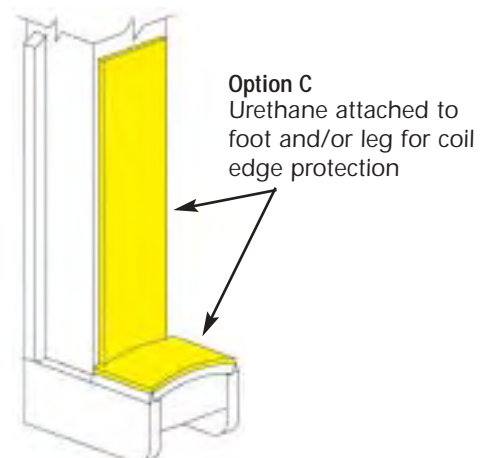
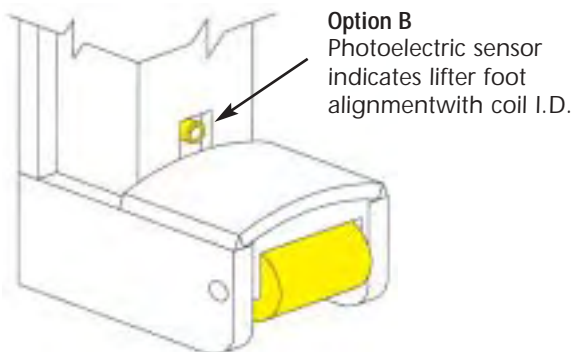
Outside width at 20" minimum coil dimension is 79-1/2".

### SPECIFICATIONS

CATALOG NO.	CAPACITY IN TONS	DIMENSIONS IN INCHES						WGT. (LBS.)
		COIL WIDTH		HDRM	THROAT	PIN/BAIL		
		MIN.	MAX.			B	C	
85-15-72	15	20	72	67-1/2	32	3	8-1/4	3440
85-20-72	20	20	72	67-1/2	32	3	8-1/4	3440
85-25-72	25	20	72	69-1/4	32	3-1/2	8	3780
85-33-72	33	20	72	69-1/4	32	3-1/2	8	3780

Other sizes available, consult factory.

## Model 85 and Model 85R





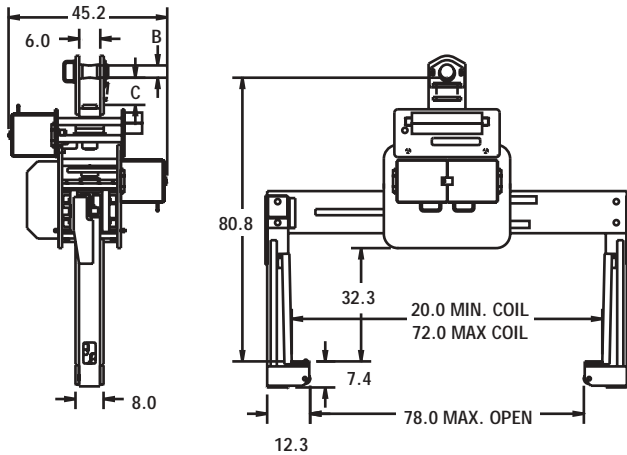
# Coil Lifters and Upenders

## Model 85R - Industrial Duty Rotating Motorized Coil Grab



### PRODUCT FEATURES:

- Motorized 350° rotation at approximately 2 RPM.
- Motorized leg drive maximizes the efficient handling of coils.
- Narrow aisle stacking maximizes coil storage floor space requirements.
- Curved lifting pads for coil protection.
- Hi impact plastic toe rollers prevent lifter foot contact.
- Anti-clamp limit switch protects coil during closing of lifter.
- Heavy Duty torque limiting drive protection during maximum open/closed conditions.
- Lockout limit switch prevents inadvertent leg opening during lift.
- Easily replaceable slide wear guides.
- Design allows for easy maintenance access to drive components.
- Designed to operate on AC power supply.
- Designed and manufactured to ASME B30.20.



### SPECIFICATIONS

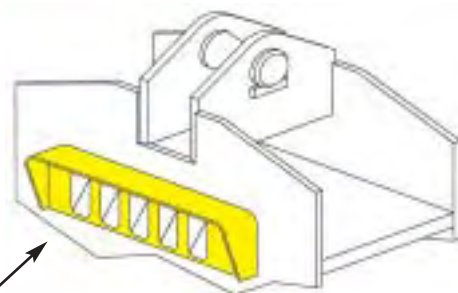
CATALOG NO.	CAPACITY IN TONS	DIMENSIONS IN INCHES						WGT. (LBS.)
		COIL WIDTH		HDRM	THROAT	PIN/BAIL		
		MIN.	MAX.			B	C	
85-15-72	15	20	72	79-1/8	32	3	8	4200
85-20-72	20	20	72	79-1/8	32	3	8	4200
85-25-72	25	20	72	80-7/8	32	3-1/2	7-3/4	4600
85-33-72	33	20	72	80-7/8	32	3-1/2	7-3/4	4600

Other sizes available, consult factory.

Outside width at 20" minimum coil dimension is 79-1/2".

## Options Available

**Option D**  
Severe duty drive option package - upgrade drive.



**Option LS**  
Load scale with digital readouts

## Mill Duty Coil Lifters

### Model 280 - Single Rim Coil Grab

A single rim coil grab is designed for usage in the primary metals industry. This lifter will adjust automatically to varying coil sizes. This lifter grips both the ID and OD of the coil when it is eye vertical, and exerts uniform pressure with a minimum of 3 to 1 grip ratio.



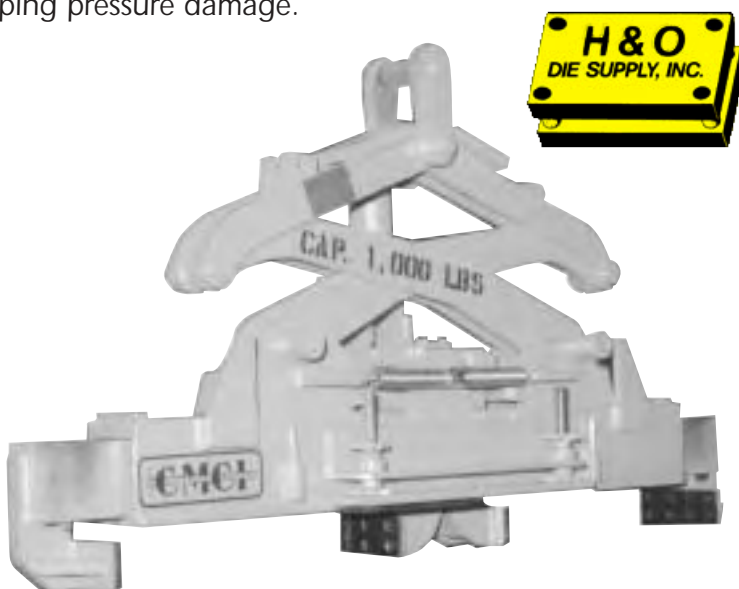
#### PRODUCT FEATURES:

- Designed to Mill Duty criteria.
- Full range automatic adjustment.
- Auto latch mechanism for attaching and releasing coils.
- All pivot points equipped with hardened steel bushings/pins equipped for lubrication.
- Handles wide range of coil sizes and capacities.
- Radiused ID and OD grip surfaces.

## Mill Duty Coil Lifters and Upenders

### Model 281 - Double Rim Coil Grab

A double rim coil grab is designed to handle light gauge or high finish coils. Unique design of this lifter assists in handling coils that tend to telescope. This lifter grips both rims of the coil which minimizes gripping pressure damage.



#### PRODUCT FEATURES:

- Designed to Mill Duty criteria.
- Full range automatic adjustment.
- Auto latch mechanism for attaching and releasing coils.
- All pivot points equipped with hardened steel bushings/pins equipped for lubrication.
- Handles wide range of coil sizes and capacities.
- Radiused ID and OD grip surfaces.

## Mill Duty Coil Lifters

### Model 282 - Mill Duty "C" Hook

C-Hooks are available in a wide range of capacities and coil sizes.



#### PRODUCT FEATURES:

- Designed to Mill Duty criteria.
- High tensile alloy steel plate reduces physical size.
- Counter balanced to hang level.
- Inside radius on hooks avoid coil edge contact.
- Curved coil saddle is standard.
- Guide handles for ease of coil positioning.
- Handles a wide range of coil widths.

#### PRODUCT OPTIONS:

1. Urethane padding available for additional coil protection.
2. Recessed counterweight for close stacking.
3. Long arm style for multiple slit coils.
4. High temperature environment capability.
5. Storage stand.

## Mill Duty Coil Lifters

### Model 285 - Telescopic Coil Lifter

The rack and pinion leg drive allows for handling a wide range of coil sizes with minimum manpower. This design is most suitable in low headroom operations. A very popular option is motorized rotation which allows the crane operator the ability to spot the coil with precise positioning.



#### PRODUCT FEATURES:

- Designed to Mill Duty criteria.
- Low headroom design.
- Grip shoe lockout switch to prevent inadvertent opening.
- Replaceable wear plates.
- Electric motor NEMA design D.
- Heavy duty gear box.
- Drive protection includes slip clutch.
- Electrical controls include stall relay.
- Machined close tolerance slide arms.
- Parent metal mechanical interlocking design.
- Curved lifting pads for coil protection.
- Designed for easy maintenance.
- AC power.



#### PRODUCT OPTIONS:

1. Powered rotation with or without stops.
2. Coil protection.
  - a. Trip plates with sensors.
  - b. Grip shoe toe rollers.
  - c. Coil I.D. sensor.
  - d. Polyurethane coverings.
3. Heavy duty function indicator lights.
4. Built in load scales.
5. Max. open/close limit switches.
6. DC power.
7. Maintenance stand.

## Mill Duty Coil Lifters

### Model 286 - Parallelogram Coil Lifter

The motorized parallelogram leg drive coil lifter is ideal where aisle space between coils is limited. This style lifter is designed so that the weight of the coil keeps the lifter closed. A very popular option is motorized rotation which allows the crane operator the ability to spot the coil with precise positioning.



#### PRODUCT FEATURES:

- Designed to Mill Duty criteria.
- Narrow aisle design.
- All pivot points supplied with hardened steel bushings/pins equipped for lubrication.
- Electric motor NEMA design D.
- Heavy duty gear box.
- Drive protection includes slip clutch.
- Electrical controls include stall relay.
- Parent metal mechanical interlocking design.
- Curved lifting pads for coil protection.
- Designed for easy maintenance.
- AC power.

#### PRODUCT OPTIONS:

1. Powered rotation with or without stops.
2. Coil protection.
  - a. Trip plates with sensors.
  - b. Grip shoe toe rollers.
  - c. Coil I.D. sensor.
  - d. Polyurethane coverings.
3. Heavy duty function indicator lights.
4. Built in load scales.
5. Max. open/close limit switches.
6. DC power.
7. Maintenance stand.



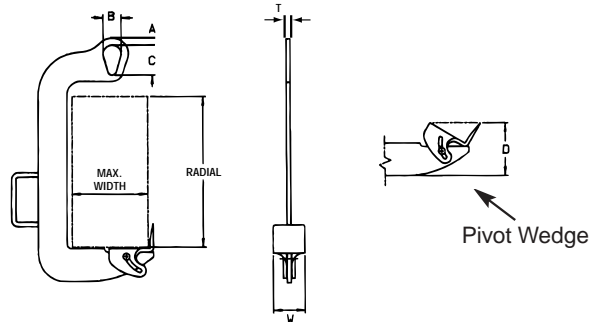
# Coil Lifters and Upenders

## Model 80H - Dixon Coil Hook with Pivoting Wedge



### PRODUCT FEATURES:

- Easy horizontal to vertical up-ending of coils.
- Pivoting wedge for easy tilting of stacked coils.
- Wedge acts as retainer.
- Efficient and easy to use.
- Popular for use with small, light weight coils.
- For use where overhead clearance is limited.
- Specially designed heat treated pivoting wedge.
- Designed and manufactured to ASME B30.20.



### SPECIFICATIONS

Catalog No.	Capacity In Tons	Dimensions in inches									Weight (Lbs.)
		Max. Width	Max. Radial	Min. I.D.	A	B	C	D	T	W	
80H-1/2-6/13	1/2	6	13	9	1	2	3-1/2	6	1/2	3-1/2	10
80H-1/2-12/13	1/2	12	13	13	1	2	3-1/2	6	1/2	3-1/2	20
80H-1-8/16	1	8	16	10	1	2	3-1/2	6	1/2	3-1/2	22
80H-2-10/18	2	10	18	12-1/2	1	2-1/2	4	6-3/4	3/4	2	45
80H-3.5-12/20	3-1/2	12	20	14-1/2	1-1/2	3-1/4	5-1/4	7-3/4	1	2-1/2	65

Other Sizes Available

**EASY HORIZONTAL TO VERTICAL MOVEMENT. DO NOT USE FOR VERTICAL TO HORIZONTAL MOVEMENT.**



Providing spacer blocks between stacked coils permits easy insertion of the wedge. Light weight and pivoting wedge makes it easy to position the hook.



With the hook in place, the wedge pivots as the lift is started, and the coil begins to turn to a vertical position for transporting it.



Coil is in vertical position after being lifted from its pallet. The weight of the coil holds the pivoting wedge in the vertical position during transportation.

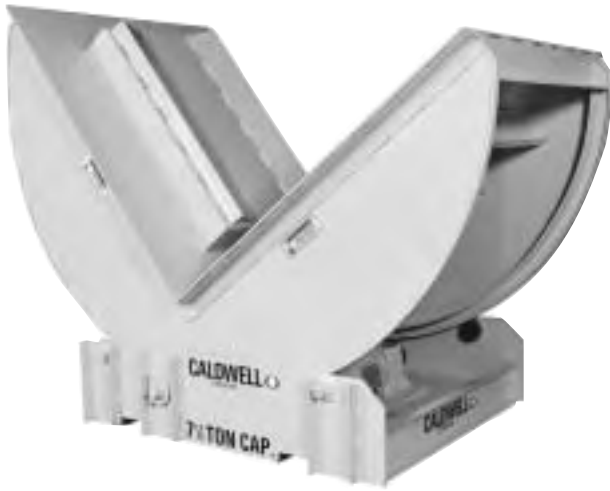


Coil being loaded on a stock reel. Hook is easily removed from the coil after releasing the hoist.



# Coil Lifters and Upenders

## Model 88 – Heavy Duty Coil Upender



### PRODUCT FEATURES:

- Fast and convenient way to upend coils to 90°.
- Heavy Duty disc brake will stop load in any position.
- Reversing magnetic starter with 115 volt pendant control.
- Stop travel/over travel limit switches.

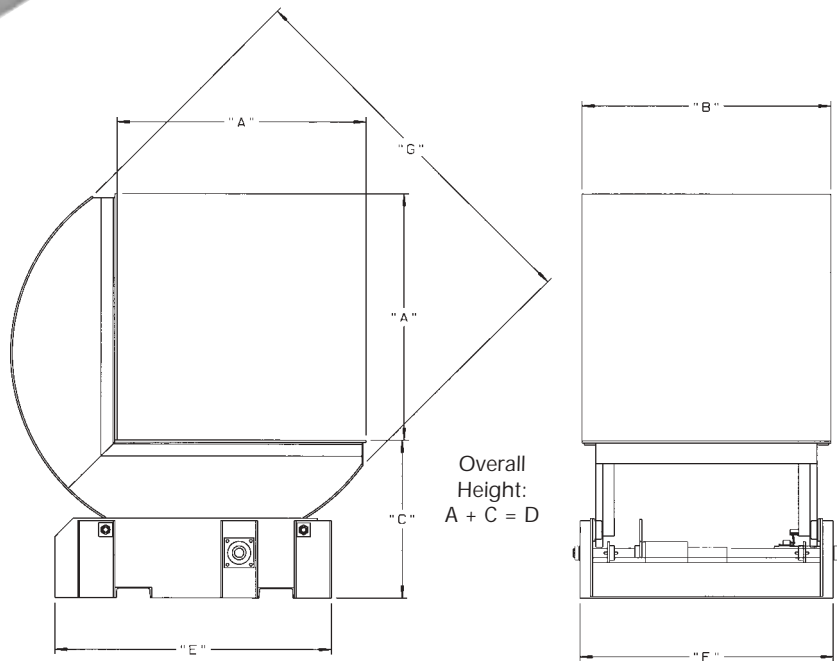
### PRODUCT OPTIONS:

- Larger platforms available.
- V Block, either standard or faced.
- 180° horizontal rotation which permits loading, and unloading from same side.
- Fork lift truck pick-up pockets.

Shown with V Block Option



**NOTE:** If load is not a coil, specify center of gravity of load being rotated.



### SPECIFICATIONS

CATALOG NO.	CAPACITY IN TONS	DIMENSIONS IN INCHES							WGT (LBS.)
		PLATFORM		HEIGHT		BASE			
		LENGTH A	WIDTH B	PLATFORM C	OVERALL D	LENGTH E	WIDTH F	OVERALL G	
88-1-36	1	36	36	24*	60	48	36	51	1,500
88-2-36	2	36	36	24*	60	48	36	51	1,600
88-3-42	3	42	42	24*	66	56	42	60	2,000
88-4-42	4	42	42	24*	66	56	42	60	2,200
88-5-48	5	48	48	30	78	61	48	66	2,750
88-7 1/2-48	7-1/2	48	48	30	78	61	48	66	2,900
88-10-54	10	54	54	30	84	60	55	74	3,700
88-12 1/2-54	12-1/2	54	54	36	90	69	55	74	4,000
88-15-60	15	60	60	36	96	73	60	80	4,500
88-20-60	20	60	60	36	96	73	60	80	6,200
88-25-72	25	72	72	43	115	88	72	96	10,000
88-30-72	30	72	72	48	120	88	72	96	12,000

\* Platform over 42" x 42" will have height of 30".

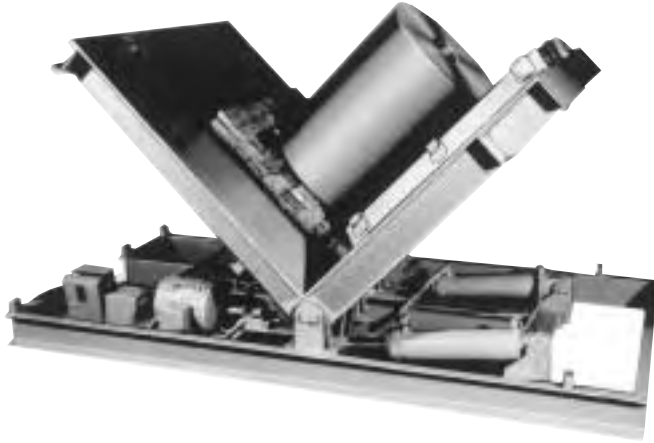
Pallets must not extend over platform sides.

Other sizes available, consult factory.



# Coil Lifters and Upenders

## Model 88L – Low Platform Coil Upender



Shown with V Block Option

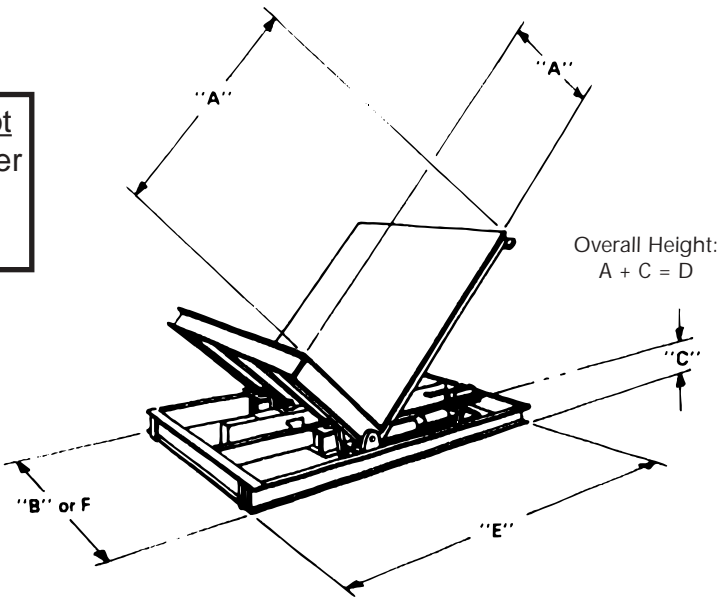
### PRODUCT FEATURES:

- Lower platform design offers easier access by operator.
- Fast and convenient way to upend coils to 90°.
- Requires less platform height.
- Magnetic starter with 115 volt pendant control.
- Double acting hydraulic cylinders.
- Relief valve prevents over-capacity rotation.
- Stop Limit switches at each end of rotation.

### PRODUCT OPTIONS:

- Larger platforms available.
- Unequal platform sizes available.
- V-block, either standard or faced.
- 180° horizontal rotation, which permits loading and unloading from same side.

**NOTE:** If load is not a coil, specify center of gravity of load being rotated.



### SPECIFICATIONS

CATALOG NO.	CAPACITY IN TONS	DIMENSIONS IN INCHES						WGT (LBS.)
		PLATFORM		HEIGHT		BASE		
		LENGTH A	WIDTH B	PLATFORM C	OVERALL D	LENGTH E	WIDTH F	
88L-1/2-36	1/2	36	36	8-1/4	44-1/4	78	36	1,500
88L-1-36	1	36	36	9-1/4	45-1/4	78	36	1,600
88L-1 1/2-36	1-1/2	36	36	10-1/4	46-1/4	78	36	1,800
88L-2-36	2	36	36	12-1/4	48-1/4	78	36	2,000
88L-2 1/2-42	2-1/2	42	42	13-1/4	55-1/4	90	42	2,200
88L-3-42	3	42	42	14-1/4	56-1/4	90	42	2,300
88L-3 1/2-42	3-1/2	42	42	15-1/4	57-1/4	90	42	2,400
88L-4-42	4	42	42	17-3/8	59-3/8	90	42	2,600
88L-4 1/2-48	4-1/2	48	48	18-3/8	66-3/8	102	48	2,800
88L-5-48	5	48	48	19-3/8	67-3/8	102	48	3,000
88L-6-48	6	48	48	20-3/8	68-3/8	102	48	3,600
88L-7 1/2-48	7-1/2	48	48	20-3/8	68-3/8	102	48	5,000

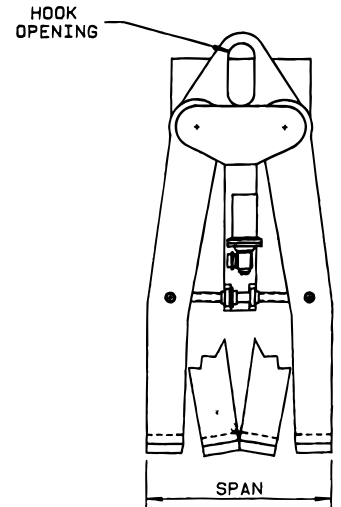
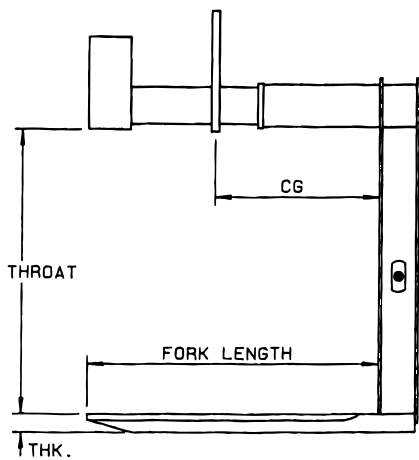
Pallets must not extend over platform sides. Other sizes available, consult factory.

# Coil Lifters and Upenders

## Model 98 – Combination Coil/Pallet Lifter

### PRODUCT FEATURES:

- Two lifters in one. Lifts horizontal or palletized coils.
- Easily converts to both lifting applications.
- Handles a wide range of coil or pallet sizes.
- Lifting arm (forks) are beveled for coil protection.
- Counter balanced to hang level for ease of insertion into coil or pallet.
- Motorized operation with torque limit protection option available.
- Self contained battery power supply option available.
- Designed and manufactured to ASME B30.20.



### Model 98 Application Information Required

Maximum Weight Lifted (Lbs.) \_\_\_\_\_

Coil OD Maximum Diameter (In.) \_\_\_\_\_

Coil ID Minimum Diameter (In.) \_\_\_\_\_

Coil Width Minimum/Maximum (In.) \_\_\_\_\_ / \_\_\_\_\_

Pallet Size (Length x Width) (In.) \_\_\_\_\_ x \_\_\_\_\_

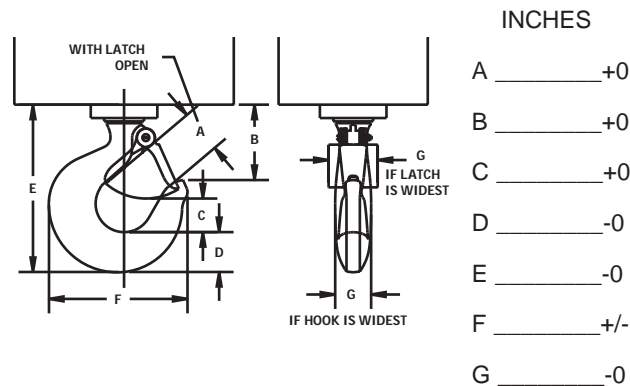
Overall height (Throat) Required (In.) \_\_\_\_\_

Fork Span Required (In.) \_\_\_\_\_

Fork Height Required (In.) \_\_\_\_\_

Specify Electrical Voltage \_\_\_\_\_

### Crane Hook Data:



### Measurement Tolerances

- +0 = Measurement should be no larger but can be smaller than actual.
- 0 = Measurement should be no smaller but can be larger than actual
- +/- = Measurement can be larger or smaller than actual.



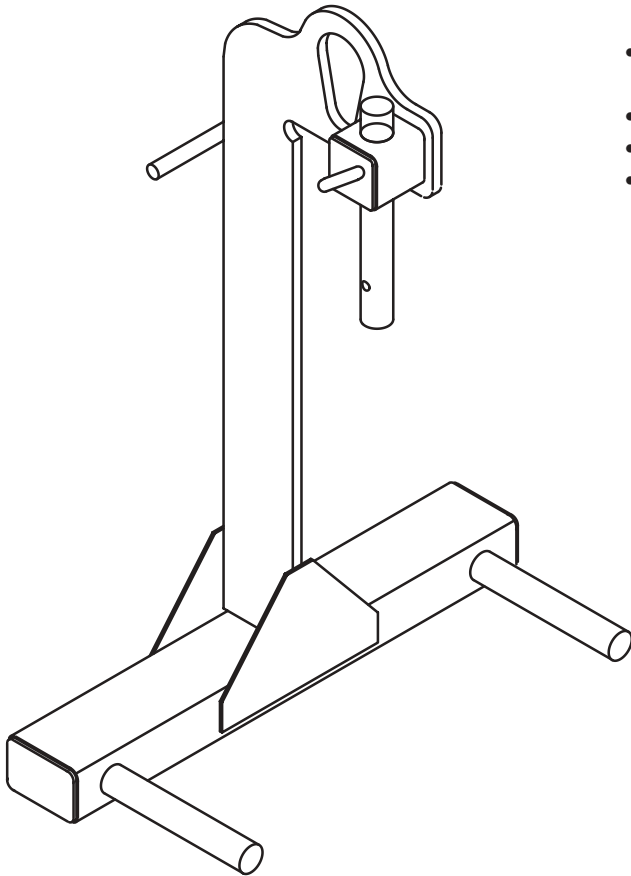
To have us review your application, please fill out this Application Information Required form and fax to 815-229-5686.

# Coil Lifters and Upenders

## Model 99 – Coil & Roll Lifter

### PRODUCT FEATURES:

- Used to load and unload materials where a “C” hook would obstruct the process.
- Adjustable “Hold-On Bar” is standard.
- Optional load protection available.
- Designed and manufactured to ASME B30.20



### Model 99 Application Information Required

Max Weight: \_\_\_\_\_

Outside Diameter: Min. \_\_\_\_\_ Max. \_\_\_\_\_

Coil/Roll Width: Min. \_\_\_\_\_ Max. \_\_\_\_\_

Is load protection desired?

Yes \_\_\_\_\_ No \_\_\_\_\_

Does decoiler spindle protrude further than minimum coil width?

Yes \_\_\_\_\_ No \_\_\_\_\_

If yes how far: \_\_\_\_\_

Additional application information:

---

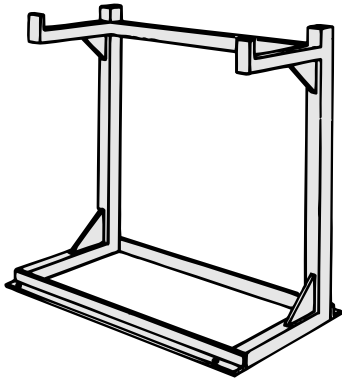
---

---

To have us review your application, please fill out this Application Information Required form and fax to 815-229-5686.

## Coil Lifters and Upenders

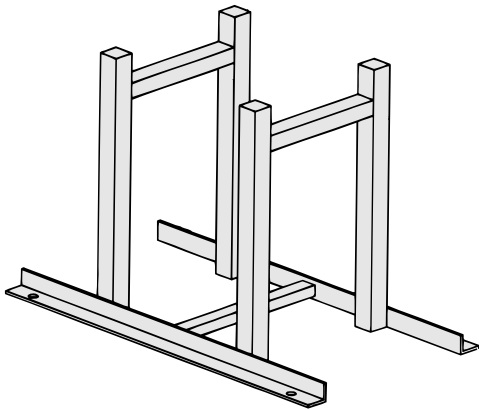
### Parking Stands for Coil Hooks



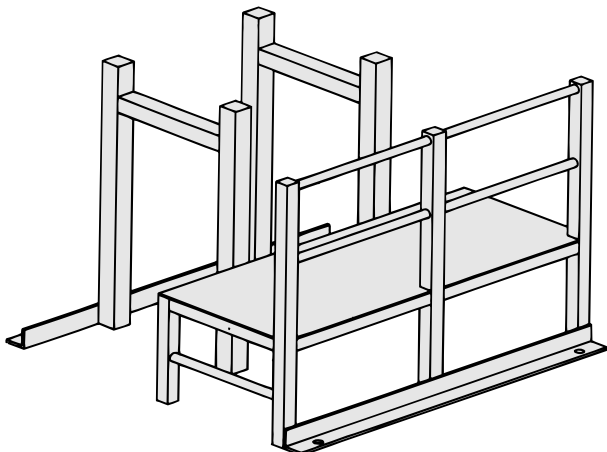
#### PRODUCT FEATURES:

- Individually designed for the size and capacity of your lifter to be stored.
- Heavy duty tubular construction.
- Minimizes lifter storage space requirements.
- Stabilizes lifter for personnel safety.
- Allows for easy access to lifter.
- Allows for easy inspection of lifter.
- Minimizes time required to engage lifter with crane hook.

**MODEL PS-CH** - Used to store all "C" Hook type lifters (Models: 82, 82LA, 82RC).



**MODEL PS-TS** - For storage of two sided coil lifters (Models: 84, 86, 85).



**MODEL PS-M-TS** - For storage and maintenance of two sided lifters. Personnel platforms provide ease of access to drive system for maintenance and inspection of motorized units.

# Coil Lifters and Upenders

## Model 87 – Coil Lifting Rams



This economical coil lifting ram is used for yard and inplant transportation of coils or rolls when a lift truck needs to be utilized.

Please specify:

1. ITA hook or shaft type mounting.
2. Lift truck model, load weight, load center.
3. Length, diameter and capacity of ram required.

### SPECIFICATIONS

Model No.	Max Capacity @ Load Center	Ram Length	Ram Diameter	Weight Lbs.
RCR-14	14,000 @ 24 IN.	48 in.	6 in.	500
RCR-20	20,000 @ 24 IN.	48	8	900
RCR-30	30,000 @ 24 IN.	48	10	1250
RCR-40	40,000 @ 36 IN.	60	12	2050
RCR-45	45,000 @ 36 IN.	60	12	2375
RCR-55	55,000 @ 48 IN.	72	16	3400
RCR-65	65,000 @ 48 IN.	72	18	3780
RCR-80	80,000 @ 48 IN.	72	18	4300