

Mini Manifold System



Ideal for transfer and progressive dies!

Features

- Offers the rugged durability of a standard manifold in a small package.
- Includes Dyne-A-Lube® lubrication systems for high speed and high volume operations.
- Custom engineered for low pressure rise.
- Provides uniform pressure on all cylinders.
- Easily adjusted force on all cylinders.
- Tested for service life at over 600 spm.

Mini Manifold Force Chart (at 138 bar/2000 psi)										
Typical force increase for 20% pressure rise manifold										
mm in.		0.0 0.00	6.4 0.25	12.7 0.50	19.1 0.75	25.4 1.00	38.1 1.50	50.8 2.00	63.5 2.50	76.2 3.00
6.4 0.25	kN lb.	3.61 810	4.31 970							
12.7 0.50	kN lb.	3.61 810	3.96 890	4.31 970						
19.1 0.75	kN lb.	3.61 810	3.85 870	4.09 920	4.31 970					
25.4 1.00	kN lb.	3.61 810	3.79 850	3.96 890	4.14 930	4.31 970				
38.1 1.50	kN lb.	3.61 810	3.73 840	3.85 870	3.96 890	4.09 920	4.31 970			
50.8 2.00	kN lb.	3.61 810	3.70 830	3.79 850	3.88 870	3.97 890	4.14 930	4.31 970		
63.5 2.50	kN lb.	3.61 810	3.68 830	3.76 840	3.83 860	3.90 880	4.05 910	4.19 940	4.31 970	
76.2 3.00	kN lb.	3.61 810	3.67 830	3.73 840	3.79 850	3.85 870	3.97 890	4.09 920	4.21 950	4.31 970

Mini Manifold Charge Pressure Chart (Force per Cylinder)								
Effective Piston Area		34 bar 500 psi	52 bar 750 psi	69 bar 1000 psi	86 bar 1250 psi	103 bar 1500 psi	121 bar 1750 psi	138 bar 2000 psi
2.62 cm ²	kN	0.9	1.35	1.81	2.26	2.71	3.16	3.61
.406 in. ²	lb.	203	305	406	508	609	711	812

Note: All dimensions are nominal. Data shown are typical. Actual data may vary.

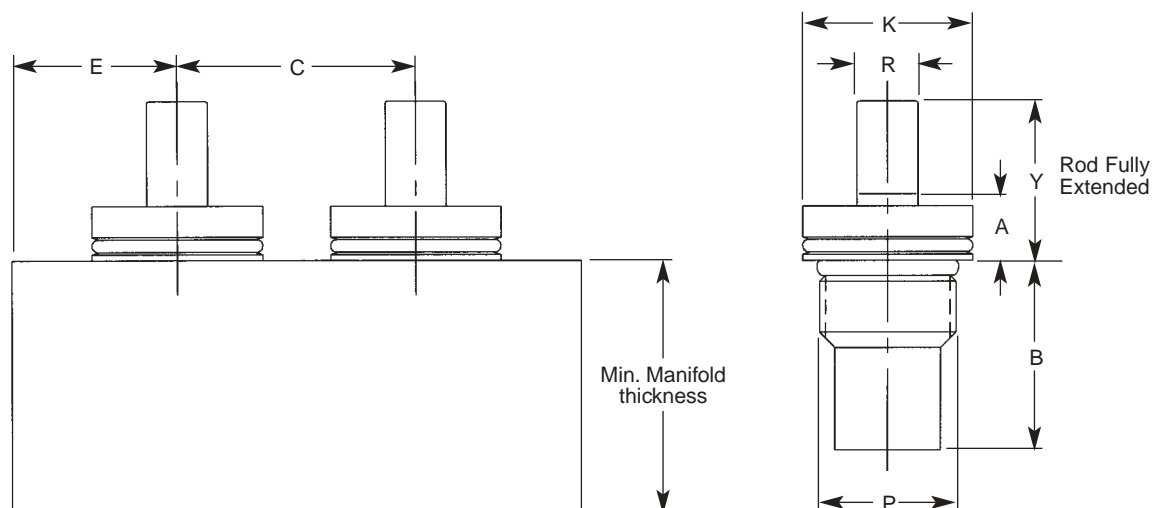


Hyson™ Products
Associated Spring®

Dynamic Solutions For A Global Market™

Nitro-Dyne® XP Series

Mini Manifold System with DLSB 400 Cylinders



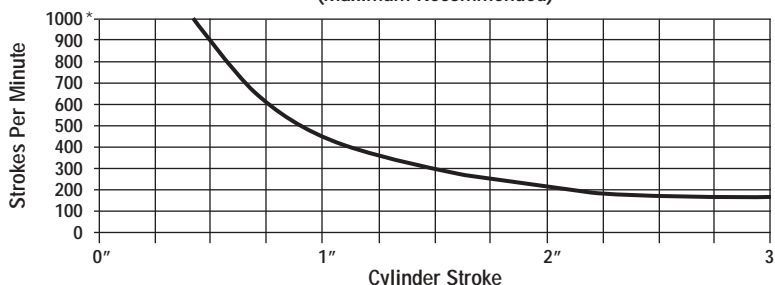
Cylinder Chart

Size/Model	Max. Force at 138 bar/2000 psi	Effective Piston Area	K	P	Actual Rod Diameter R	A	Min. Center Distance C	Min. Edge Distance E
DLSB 400	3.60 kN	2.62 cm ²	36 mm	1 1/8-12	13 mm	14 mm	44 mm	21 mm
.4 ton	810 lbs.	0.406 in ²	1.40 in.	1 1/8-12	0.50 in.	0.54 in.	1.75 in.	0.81 in.

Variable Dimensions with Stroke Chart

Stroke	B	Y	Min. Manifold Thickness
6 mm 0.25 in.	26 1.03	20 0.79	35 1.38
13 mm 0.50 in.	32 1.25	26 1.03	41 1.62
19 mm 0.75 in.	39 1.53	33 1.29	48 1.88
25 mm 1.00 in.	45 1.78	39 1.54	54 2.12
38 mm 1.50 in.	58 2.28	52 2.04	67 2.62
51 mm 2.00 in.	70 2.78	64 2.54	79 3.12
64 mm 2.50 in.	83 3.28	77 3.04	92 3.62
76 mm 3.00 in.	96 3.78	90 3.54	105 4.12

Cylinder Stroke Rate
(Maximum Recommended)



*Above 1000 strokes per minute, consult Hyson Products Customer Service.

Hyson™ Products
Associated Spring

