



Anchor Lamina Inc.



LamCam™

Max 90 & Micro 90 Bump Cams



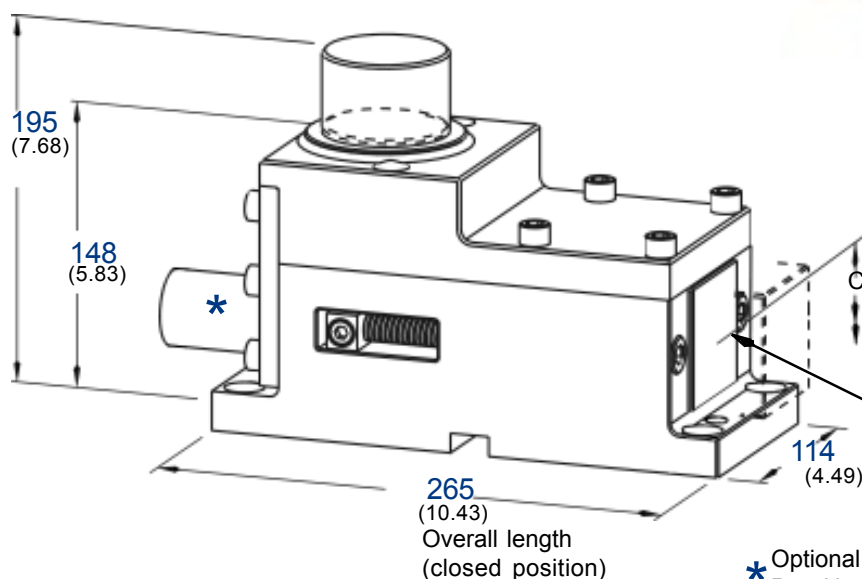
micro90 bump-cams LCB6040



Unique design and construction

For use in:

- Progressive Dies
- Transfer Dies
- Line Dies



Center of slide to bottom of cam 56.5 (2.22)

Tool Mounting Surface
63mm (2.48) Square
Accommodates punch retainers.
Mounting surface hardness: 28-32 Rc

- * Optional Spring return booster kit
Part No. B6040BSK 41mm Dia X 153 mm Length (1.61" x 6")
Replacement Booster Spring: IMD040139
Pre-load: 218 N (49 lbs)
Final Load (full stroke): 1907 N (428 lbs)

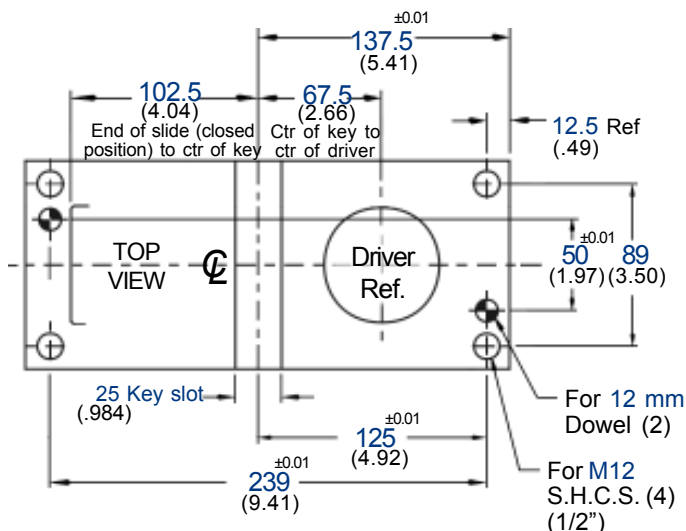
The maximum dynamic load ratings have a 2:1 safety factor to assure optimum service life.

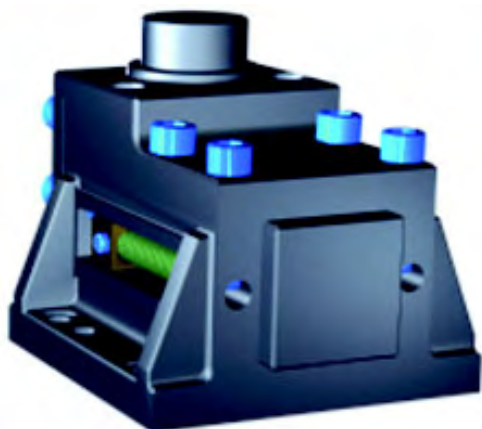
Load Rating	Slide output working force at maximum Dynamic Load	35.6 kN (4 tons)
	Static Load at Yield	317 kN (35.7 tons)
Slide Travel (Stroke)		40mm (1.57")
Replacement Return Spring	Part Number	IMD016076 (4 required)
	Pre-Load	213 N (48 lbs)
	Final Load (full stroke)	811 N (182 lbs)

Inch reference dimensions shown in brackets.

- Mounting Screws and Dowels included.
- All wear components hardened and ion-nitrided.
- Grease fitting installed for single point lubrication. (Moly Fortified NLGI #2 grade Lithium 12 grease)

Be sure to check our website www.anchorlamina.com for the latest technical information.



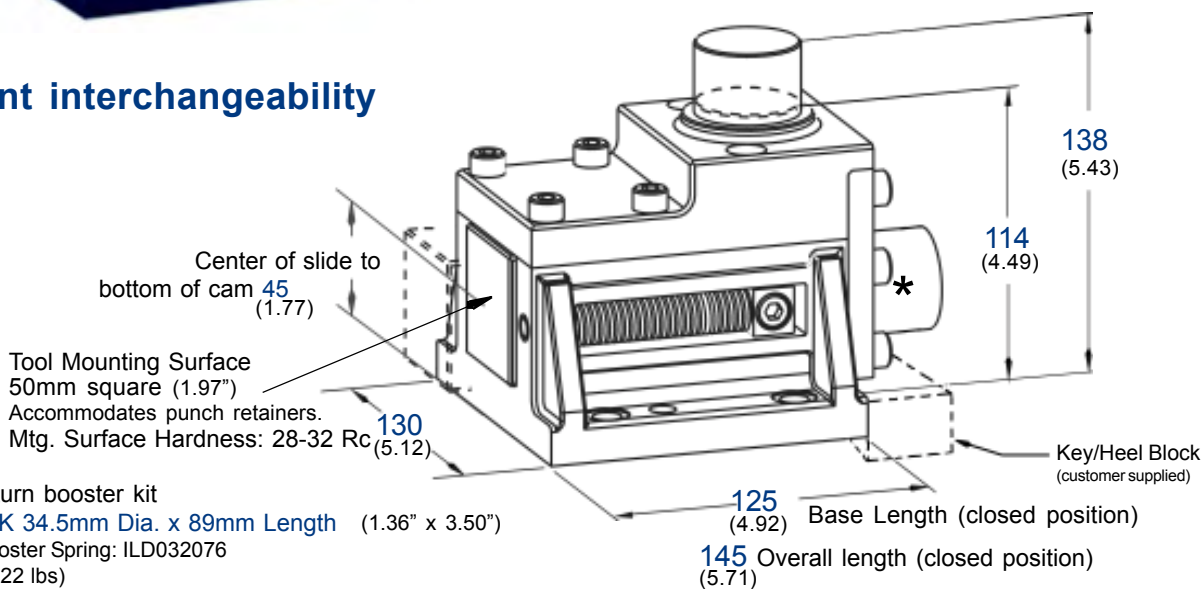


max **90**
bump-cams
LCB5020

Total component interchangeability

Applications:

- **Piercing**
- **Flanging**
- **Trimming**



* Optional spring return booster kit

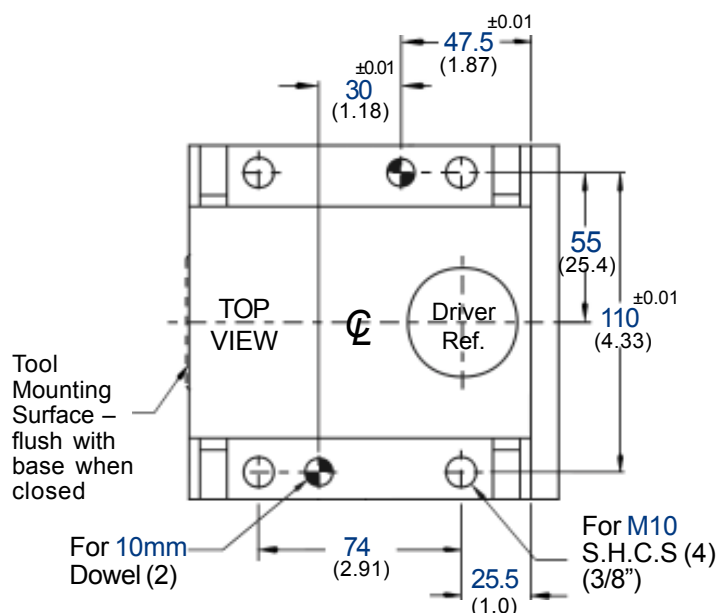
Part No. B5020BSK 34.5mm Dia. x 89mm Length (1.36" x 3.50")

Replacement Booster Spring: ILD032076

Pre-Load: 98 N (22 lbs)

Final Load (Full Stroke): 238 N (53.5) Lbs

* Can be fitted with nitrogen springs.



The maximum dynamic load ratings have a 2:1 safety factor to assure optimum service life.

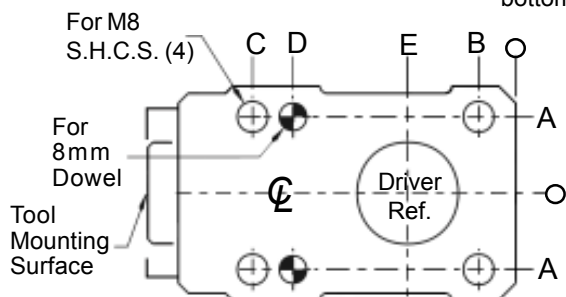
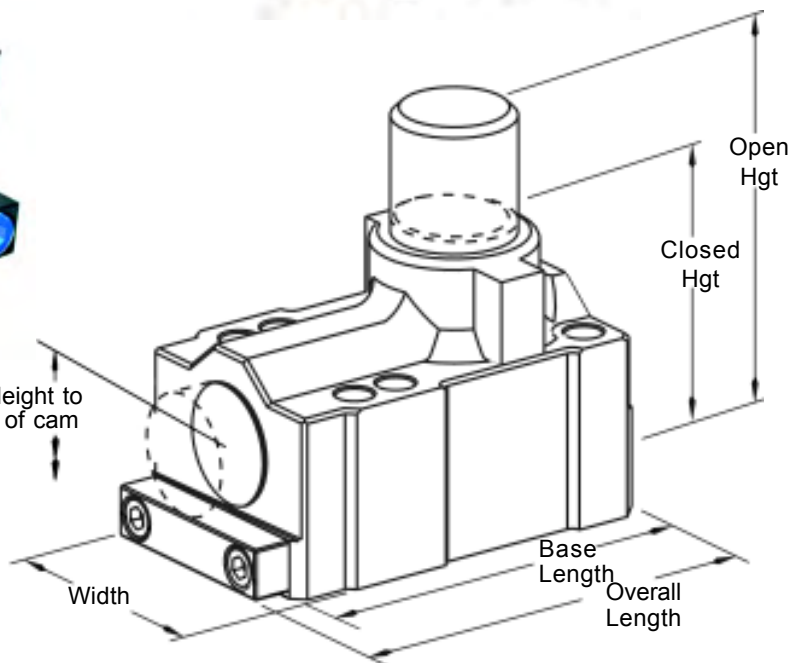
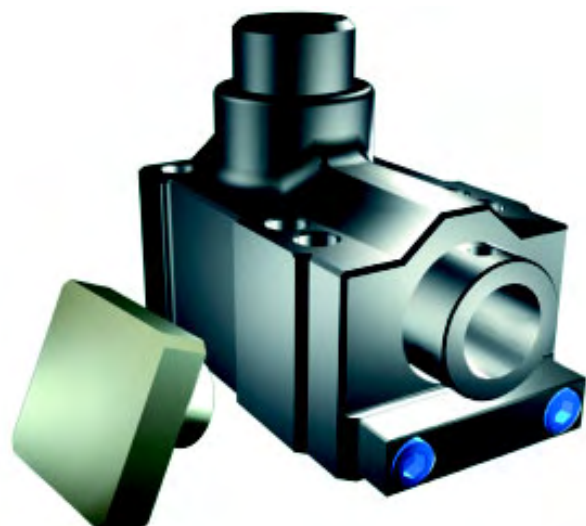
Load Rating	Slide output working force at maximum Dynamic Load	22.2 kN (2.5 tons)
	Static Load at Yield	200 kN (22.5 tons)
Slide Travel (Stroke)		20mm (.79")
Replacement Return Spring	Part Number	ILD020076 (2 required)
	Pre-Load	96 N (21.5 lbs)
	Final Load (full stroke)	730 N (164 lbs)

Inch reference dimensions shown in brackets.

- *Mounting Screws and Dowels included.*
- *All wear components hardened and ion-nitrided.*
- *Grease fitting installed for single point lubrication. (Moly Fortified NLGI #2 grade Lithium 12 grease)*



micro90 bump-cams



PART NUMBER	A ±0.01	B	C	D ±0.01	E	Slide Travel	Open Hgt	Closed Hgt	Slide Hgt	Slide Dia	Width	Base Length	Overall Length
LCM3020	22.5 (.89)	11.0 (.43)	78.0 (3.07)	66.0 (2.60)	32.0 (1.26)	20.0 (.79)	95.0 (3.74)	71.0 (2.80)	30.0 (1.18)	30.0 (1.18)	66.0 (2.60)	100.0 (3.94)	109.5 (4.31)
LCM4025	30.0 (1.18)	9.0 (.35)	118.0 (4.65)	106.0 (4.17)	37.0 (1.46)	25.0 (.98)	119.0 (4.69)	89.0 (3.50)	40.0 (1.57)	40.0 (1.57)	79.0 (3.11)	127.0 (5.00)	136.5 (5.37)

Inch reference dimensions shown in brackets.

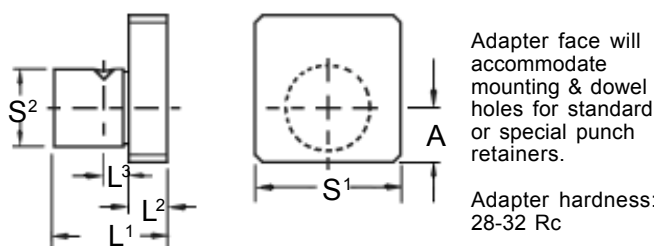
The maximum dynamic load ratings have a 2:1 safety factor to assure optimum service life.

RETURN SPRING FORCES

PART NUMBER →		LCM3020	LCM4025
Slide Output working force at maximum Dynamic Load		8.9kN (1.0 Tons)	13.3kN (1.5 Tons)
Static Load at Yield		267kN (30 Tons)	534kN (60 Tons)
Return Spring Forces	Pre-Load	38 N (8.5 lbs)	78 N (17.5 lbs)
	Final Load (full stroke)	328 N (73.7 lbs)	468 N (105 lbs)
Replacement Return Spring (2 Required)		ILD012076	ILD016102

- Mounting Screws and Dowels included.
- All wear components are hardened and ion-nitrided.
- Grease fitting installed for single point lubrication. (Moly Fortified NLGI #2 grade Lithium 12 grease.)

SQUARE ADAPTERS



PART NUMBER	S ¹	S ²	L ¹	L ²	L ³	A
LCM3002	38 (1.50)	20 (.79)	30 (1.18)	10 (.39)	6.5 (.26)	14.0 (.55)
LCM4002	50 (1.97)	20 (.79)	30 (1.18)	10 (.39)	6.5 (.26)	20.0 (.79)