



# MAGNUM

P R E S S



#### Standard Equipment:

- Allen Bradley MicroLogix PLC with Panel View HMI based controls
- 2-Hand No-Tie-Down Start
- CAT 4 Safety Start Relay
- Adjustable Tonnage
- Adjustable Stroke
- Pressure and Distance Reversal Mode
- Manual Setup Mode
- Energy Saver Shut Down
- Top Stop Over-Run
- True 2 Speed Ram
- Electro-Hydraulic Decompression
- Self-Contained Removable Hydraulic Power Unit
- Visual Level/Temp Gauge
- Removable Bolster
- Lockable Disconnect
- NEMA enclosures
- TEFC EISA Compliant Electric Motor
- Magnetic Starter/ Electronic Overload
- Single Point Power Connection

*Magnum Press has a long list of options that you can select from to customize your press the way you need it.*

## M2PB Series Bench Model Gap Frame Press with 2 Post Guided Tool Plate

#### Bench Model Gap Frame Hydraulic Press

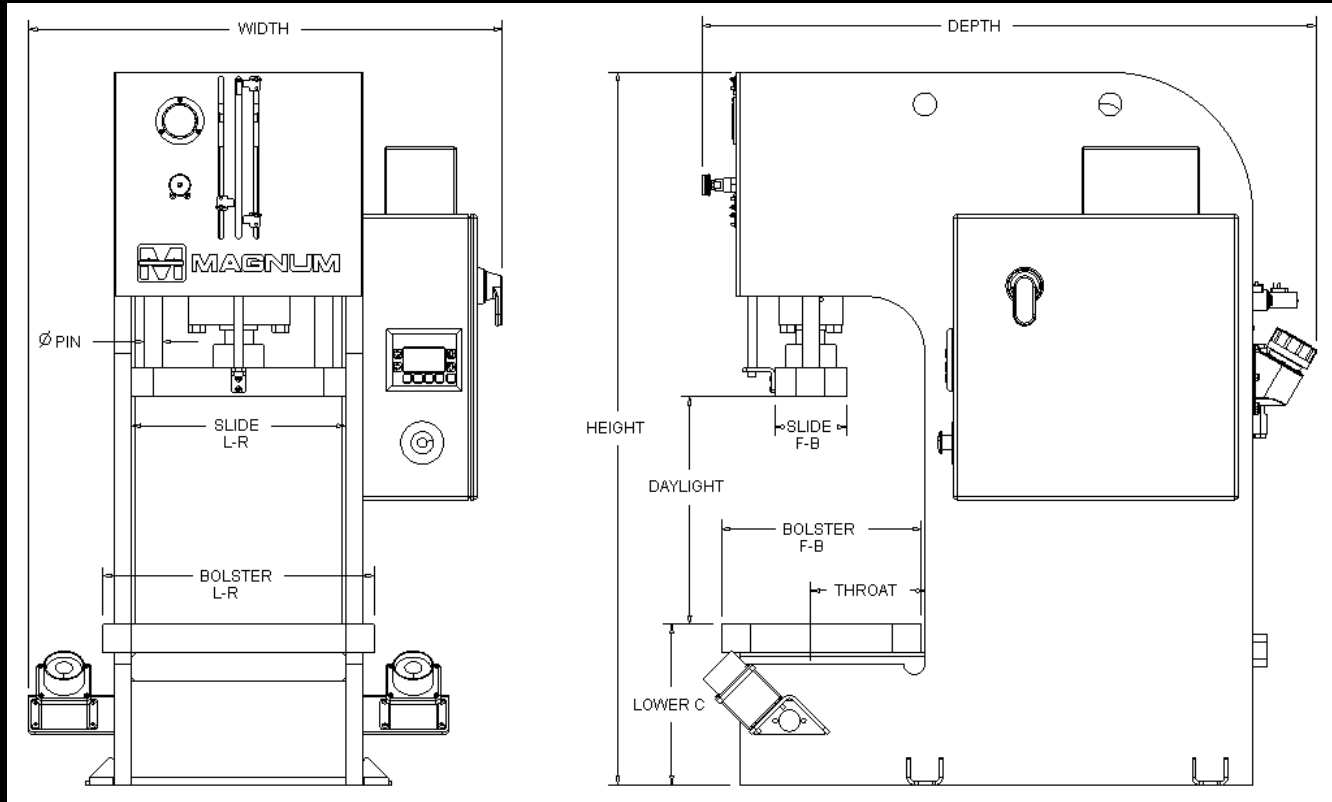
Often referred to as a "C" frame hydraulic press, these compact hydraulic presses are available in standard model configurations from 2 ton to 35 tons. These machines can be easily customized for your application. They are designed to be mounted on separate stand or table. These self contained hydraulic presses are suitable for a wide variety of operations including assembly, blanking, coining, forming, punching, riveting and staking. As with any Magnum hydraulic press they can be modified to meet your specific need. They are available in MCB standard gap frame configuration, M2PB 2 post guided tool plate, M4PB 4 post guided tool plate, MGB gib guided and an MCC economical compact version.

#### Optional Floor Stands:

- FS-01 fits 2-6 Ton Presses  
24" wide x 30" deep x 30" high
- FS-02 fits 10-15 Ton Presses  
30" wide x 40" deep x 30" high
- FS-03 fits 25-35 Ton Presses  
32" wide x 45" deep x 20" high



# MAGNUM PRESS



MODEL	M2PB-	4A	4B	6A	6B	10A	10B	15A	15B	25A	25B	35A	35B
Rated Tonnage ( <i>Adjustable</i> )		3.9	3.9	6.1	6.1	10.4	10.4	15.7	15.7	24.5	24.5	35.3	35.3
Minimum Tonnage		0.8	0.8	1.2	1.2	2.1	2.1	3.1	3.1	4.9	4.9	7.1	7.1
CPM (1")	.13" WORK	90	110	90	90	78	78	68	68	70	70	70	70
CPM (4")		40	52	37	80	31	67	25	61	27	61	26	56
Stroke ( <i>in. adjustable</i> )		7	8	9	10	11	12	13	14	15	16	17	18
Daylight ( <i>in</i> )		14	14	14	14	16	16	16	16	20	20	20	20
Shut Height ( <i>in</i> )		7	7	7	7	8	8	8	8	10	10	10	10
Throat ( <i>in</i> )		7	7	7	7	8	8	8	8	10	10	10	10
Bolster L-R ( <i>in</i> )		14	14	14	14	18	18	19	19	24	24	25	25
Bolster F-B ( <i>in</i> )		11	11	11	11	14	14	14	14	16	16	17.5	17.5
Slide L-R ( <i>in</i> )		12	12	12	12	15	15	15	15	20	20	20	20
Slide F-B ( <i>in</i> )		4	4	4	4	5	5	5	5	6	6	7	7
Slide Pin Dia ( <i>in</i> )		1	1	1	1	1.25	1.25	1.25	1.25	1.5	1.5	1.5	1.5
HP (1800 rpm)		3	5	5	5	7.5	7.5	10	10	15	15	20	20
Reservoir Capacity ( <i>gal</i> )		14	14	14	14	25	25	25	25	60	60	60	60
Width ( <i>in</i> )		29	29	29	29	33	33	34	34	39	39	39	39
Depth ( <i>in</i> )		41	41	41	41	43	43	43	43	55	55	57	57
Height ( <i>in</i> )		40	40	40	40	50	50	50	50	60	60	62	62
Approx Weight ( <i>lbs</i> )		770	800	830	865	2030	2080	2140	2190	3965	4065	4740	4820
Lower 'C' Height ( <i>in</i> )		9	9	9	9	11.3	11.3	11.3	11.3	14	14	14.5	14.5
Bolster Thickness ( <i>in</i> )		1.25	1.25	1.25	1.25	2	2	2	2	2.5	2.5	2.5	2.5

**H&O Die Supply** 7200 Interstate 20 Kennedale, TX 76060 [www.hodie.com](http://www.hodie.com)  
**Phone: 817-985-0400 Fax: 817-985-0046**