



MAGNUM P R E S S



Standard Equipment:

- Allen Bradley MicroLogix PLC with Panel View HMI based controls
- 2-Hand No-Tie-Down Start
- CAT 4 Safety Start Relay
- Adjustable Tonnage
- Adjustable Stroke
- Pressure and Distance Reversal Mode
- Manual Setup Mode
- Energy Saver Shut Down
- Top Stop Over-Run
- True 2 Speed Ram
- Electro-Hydraulic Decompression
- Self-Contained Removable Hydraulic Power Unit
- Visual Level/Temp Gauge
- Removable Bolster
- Lockable Disconnect
- NEMA enclosures
- TEFC EISA Compliant Electric Motor
- Magnetic Starter/ Electronic Overload
- Single Point Power Connection

Magnum Press has a long list of options that you can select from to customize your press the way you need it.

M4PB Series Bench Model Gap Frame Press with 4 Post Guided Tool Plate

Bench Model Gap Frame Hydraulic Press

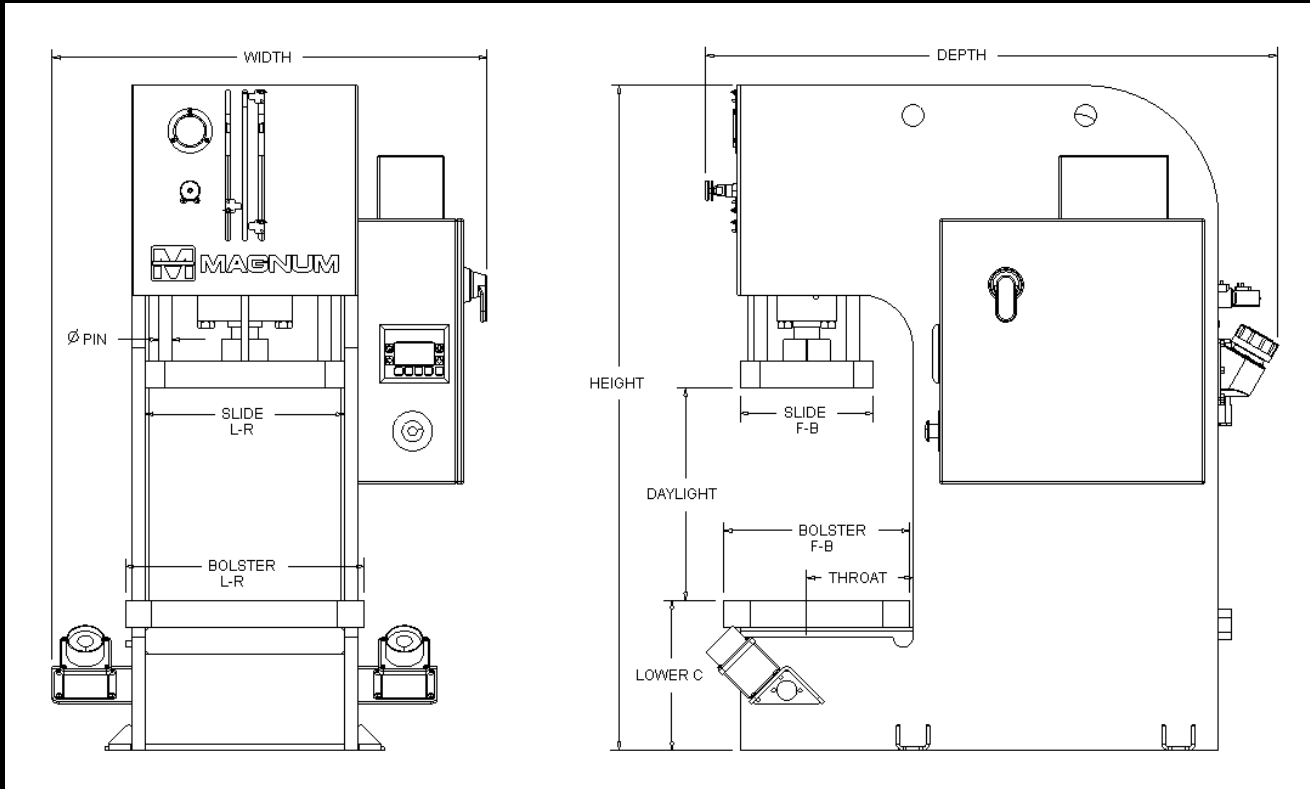
Often referred to as a "C" frame hydraulic press, these compact hydraulic presses are available in standard model configurations from 2 ton to 35 tons. These machines can be easily customized for your application. They are designed to be mounted on separate stand or table. These self contained hydraulic presses are suitable for a wide variety of operations including assembly, blanking, coining, forming, punching, riveting and staking. As with any Magnum hydraulic press they can be modified to meet your specific need. They are available in MCB standard gap frame configuration, M2PB 2 post guided tool plate, M4PB 4 post guided tool plate, MGB gib guided and an MCC economical compact version.

Optional Floor Stands:

- FS-01 fits 2-6 Ton Presses
24" wide x 30" deep x 30" high
- FS-02 fits 10-15 Ton Presses
30" wide x 40" deep x 30" high
- FS-03 fits 25-35 Ton Presses
32" wide x 45" deep x 20" high



MAGNUM PRESS



MODEL	M4PB-	4A	4B	6A	6B	10A	10B	15A	15B	25A	25B	35A	35B
Rated Tonnage (Adjustable)		3.9	3.9	6.1	6.1	10.4	10.4	15.7	15.7	24.5	24.5	35.3	35.3
Minimum Tonnage		0.8	0.8	1.2	1.2	2.1	2.1	3.1	3.1	4.9	4.9	7.1	7.1
CPM (1")	.13"	90	110	90	90	78	78	68	68	70	70	70	70
CPM (4")	WORK	40	52	37	80	31	67	25	61	27	61	26	56
Stroke (in. adjustable)		7	7	7	7	8	8	8	8	10	10	10	10
Daylight (in)		14	14	14	14	16	16	16	16	20	20	20	20
Shut Height (in)		7	7	7	7	8	8	8	8	10	10	10	10
Throat (in)		7	7	7	7	8	8	8	8	10	10	10	10
Bolster L-R (in)		14	14	14	14	18	18	19	19	24	24	25	25
Bolster F-B (in)		12	12	12	12	14	14	14	14	16	16	17.5	17.5
Slide L-R (in)		12	12	12	12	15	15	15	15	20	20	20	20
Slide F-B (in)		8	8	8	8	10	10	10	10	10.5	10.5	13	13
Slide Pin Dia (in)		1	1	1	1	1	1	1	1	1.5	1.5	1.5	1.5
HP (1800 rpm)		3	5	5	5	7.5	7.5	10	10	15	15	20	20
Reservoir Capacity (gal)		14	14	14	14	25	25	25	25	60	60	60	60
Width (in)		29	29	29	29	33	33	34	34	39	39	39	39
Depth (in)		42	42	42	42	43	43	43	43	55	55	57	57
Height (in)		40	40	40	40	50	50	50	50	60	60	62	62
Approx Weight (lbs)		780	810	840	875	2050	2100	2160	2210	4015	4105	4780	4860
Lower 'C' Height (in)		9	9	9	9	11.3	11.3	11.3	11.3	14	14	14.5	14.5
Bolster Thickness (in)		1.25	1.25	1.25	1.25	2	2	2	2	2.5	2.5	2.5	2.5

H&O Die Supply 7200 Interstate 20 Kennedale, TX 76060 www.hodie.com
Phone: 817-985-0400 Fax: 817-985-0046