



# Quotation Request

Fax to: 214-630-6693

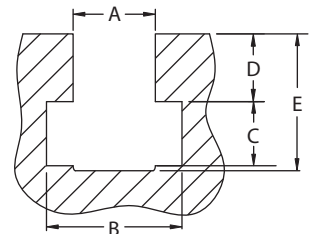


## General Information

Company Name: \_\_\_\_\_  
 Contact: \_\_\_\_\_ Title: \_\_\_\_\_  
 Address: \_\_\_\_\_  
 Phone: \_\_\_\_\_ Ext: \_\_\_\_\_ Fax: \_\_\_\_\_ Email: \_\_\_\_\_

## Press Information

Manufacturer and Model: \_\_\_\_\_  
 Press Type: \_\_\_ C-Frame \_\_\_ Straight Side Tonnage: \_\_\_\_\_  
 Bolster Dimensions: \_\_\_\_\_ (Width L-R) x \_\_\_\_\_ (Length F-B) x \_\_\_\_\_ Height (Thickness)  
 T-Slots: \_\_\_ L-R \_\_\_ F-B \_\_\_ None  
 T-Slot Dimensions: A \_\_\_\_\_ B \_\_\_\_\_ C \_\_\_\_\_ D \_\_\_\_\_ E \_\_\_\_\_  
 Ram Dimensions: \_\_\_\_\_ (Width L-R) x \_\_\_\_\_ (Length F-B) x \_\_\_\_\_ Height (Thickness)  
 T-Slots: \_\_\_ L-R \_\_\_ F-B \_\_\_ None  
 T-Slot Dimensions: A \_\_\_\_\_ B \_\_\_\_\_ C \_\_\_\_\_ D \_\_\_\_\_ E \_\_\_\_\_  
 Maximum Stripping Force: \_\_\_\_\_



## Die Information

Maximum Total Weight: \_\_\_\_\_ Lbs. Upper: \_\_\_\_\_ Lbs. Lower \_\_\_\_\_ Lbs.  
 Dimensions: Maximum \_\_\_\_\_ L-R x \_\_\_\_\_ F-B Minimum \_\_\_\_\_ L-R x \_\_\_\_\_ F-B  
 Clamping Ledge Shoe Height: Bolster \_\_\_\_\_ Ram \_\_\_\_\_  
 Are Dies Slotted for Clamps? \_\_\_ Yes \_\_\_ No  
 Number of bolts currently used to clamp dies: Bolster \_\_\_\_\_ Ram \_\_\_\_\_  
 Dies Loaded From: \_\_\_ Left \_\_\_ Right \_\_\_ Front \_\_\_ Back  
 Dies Unloaded From: \_\_\_ Left \_\_\_ Right \_\_\_ Front \_\_\_ Back

## Clamping Information

Type of Clamps Preferred: → Select Type of Lock Preferred:

- \_\_\_ Hydraulic Rocker Clamps → \_\_\_ Manual Lock \_\_\_ Hyd. Check Valve \_\_\_ Fully Hydraulic
- \_\_\_ Adj. Hyd. Rocker Clamps → \_\_\_ Manual Lock \_\_\_ Hyd. Check Valve \_\_\_ Fully Hydraulic
- \_\_\_ Hyd. Ledge Clamps → \_\_\_ Manual Lock \_\_\_ Hyd. Check Valve \_\_\_ Fully Hydraulic
- \_\_\_ Hydraulic Cylinder Clamps → \_\_\_ Manual Lock \_\_\_ Hyd. Check Valve \_\_\_ Fully Hydraulic
- \_\_\_ Mechanical Clamps

## Die Lifter Information

Type of Die Lifters Preferred: → Select Type of Bearings Preferred:

- \_\_\_ Hydraulic Lift → \_\_\_ Ball Type (Spherical) \_\_\_ Cylinder Type
- \_\_\_ Pneumatic Lift → \_\_\_ Ball Type (Spherical) \_\_\_ Cylinder Type
- \_\_\_ Spring Lift

## Bolster Extensions

\_\_\_ Lift-off Type \_\_\_ Folding Type → Length \_\_\_\_\_

## Hydraulic Controls

\_\_\_ Manual 2-Position Valve \_\_\_ Electric Switch

H&O Die Supply, Inc.  
 Toll Free: 800-222-5441 Fax: 214-630-6693  
 www.hodie.com sales@hodie.com

